



ROSEDALE



2,611 SF



4 BEDROOMS



2.5 BATHROOMS

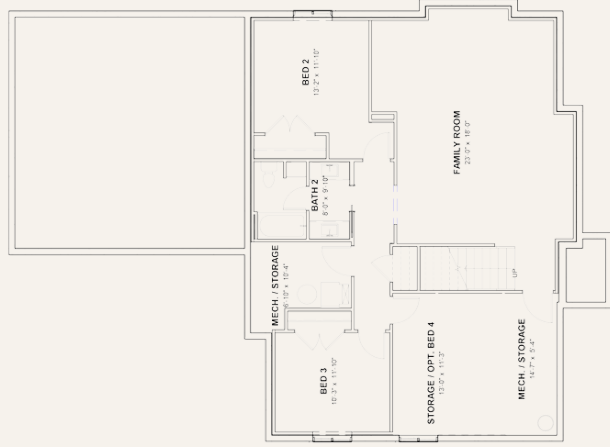


RANCH

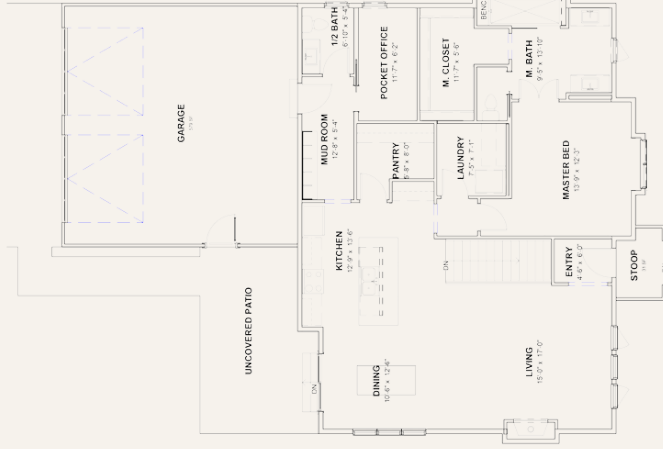
Traditional cottage charm blended with contemporary sophistication. Characterized by clean lines, elegant stone accents, and large windows, this home combines ranch-style architecture with refined luxury and comfort.

The Rosedale plan offers a unique combination of single-level living and luxurious design. From the open great room to the private bedrooms, each space is meticulously crafted to provide comfort and style, making it the perfect place to relax and enjoy life's best moments.

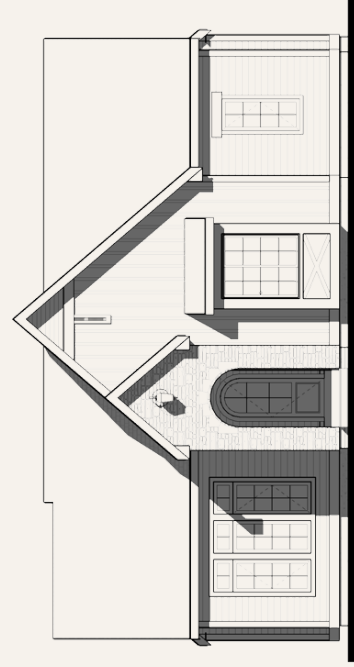
ROSEDALE



Basement



First Floor



Front Elevation